



SSC-FDS-100 Fever Detection System

Product Overview

FDS -100 Fever Detection is ideal for no-contact mass fever screening in high traffic areas. Fever Detection System (FDS) consists of a camera (thermal + optical), a laptop with CMS software and a light bar. When the thermal camera detects a body temperature above the pre-set threshold, an alarm sounds and the light bar lights up in red. All of this happens in real time. An email notification is sent to the email address in the system. FDS-100 provides a non-contact, accurate and fast way to calculate if a person has a fever.



Price: \$7,500

Components & Accessories			
FDSIR-160	IP Dual Camera (thermal + optical)	\$3,080	\$3,800
FDS-CMS	9 Ch CMS Software	\$2,000	\$2,500
FDS-TRP	Tripod	\$210	\$250
FDS-PESW	POE Switch	\$130	\$150

Product Features

- 9 Channel monitoring with intuitive UI (look and function) / UX (Feel of product)
- Non-contact, no need to touch the device. Takes automatic measurements
- Support body temperature detection and personnel information binding, which can quickly confirm personnel information and do body temperature detection
- Support configure temperature detection threshold value, and personnel access authority can be configured through temperature detection threshold value
- Uses Infrared detection to detect body temperature of a person
- Super-efficient, reduces measurement time, require minimal manpower, simultaneous monitoring is available
- Live alerts sent to your email or phone if a person's temperature is above the previously selected threshold



- Ready to use laptop with CMS software provided
- Thermal and Optical camera that provides extreme accuracy up to plus or minus 0.5°C
- Support screen sleep mode, keep the minimum brightness to prevent glare at night
- Has up to 8Gb of Internal Memory, also has the capability to store data in the cloud
- E-mail transmission, smart phone and PC web monitoring.
- Has two different various lens of 25 degrees and 50 degrees for optimal temperature taking
- Set up a FDS-100 system at all access points, all information will be connected directly to a centralized system

Ordering Information

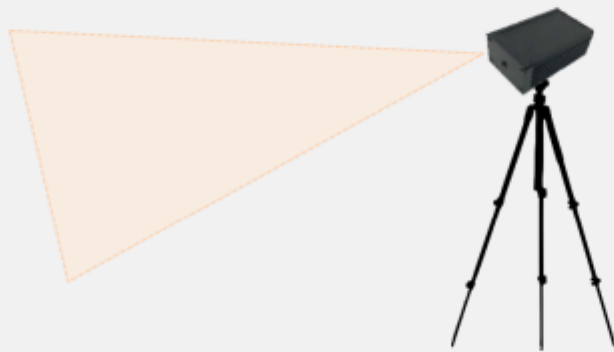
Model	Comment
FDS-100	Comes with the following: Dual Camera (Optic+ Thermal), Tripod, Laptop with CMS Software Installed, POE Switch, Connection cables and instruction manual.

Product Specification

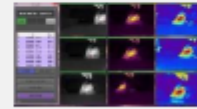
Features Parameter	Description
Operation System	CMS Software
Storage Capacity	8GB
Status Indicator	Two color LED function Indicator
Measurement Range	0°C ~ 50°C
Measurement Accuracy	+ - 0.5°C
Measurement Deviation	≤0.5°C
Measurement Distance	1~1.5M
Detection Sensor	FPA, Uncooled Micro biometer
User Management	Support user library addition, deletion, update
Record Management	Support local recording and real-time upload
Power Supply	IP Network
Image Resolution	160x 120
Frame Rate	9Hz
Field of View	56 degrees (Horizontal;) X 71 degrees (vertical)
Camera Sensitivity	50mK
Number of Channels for CMS Software	9 Channels
Color Displays	Black and White, Magenta and Rainbow

Product Configuration

[System Configuration]



- Thermal + Optical Camera
- Tripod



- CMS Software



- Laptop / Desktop

Single-Channel System Configuration



Dual Camera

Ethernet

Laptop



CMS Software

Multi-Channel System Configuration

